

# PRODUCT INFORMATION



Maltoheptaose is a maltooligosaccharide that is used for research and diagnostic purposes. It can also be used in nutrients and healthcare.

## MALTOHEPTAOSE

No: MDP07

**Formal Name:** O- $\alpha$ -D-Glucopyranosyl-((1 $\rightarrow$ 4)-O- $\alpha$ -D-glucopyranosyl)<sub>5</sub>-(1 $\rightarrow$ 4)-D-glucopyranose

**MF:** C<sub>42</sub>H<sub>72</sub>O<sub>36</sub>

**FW:** 1153.00

**Lot:** 20230526

**Purity(HPLC):** 98.8%

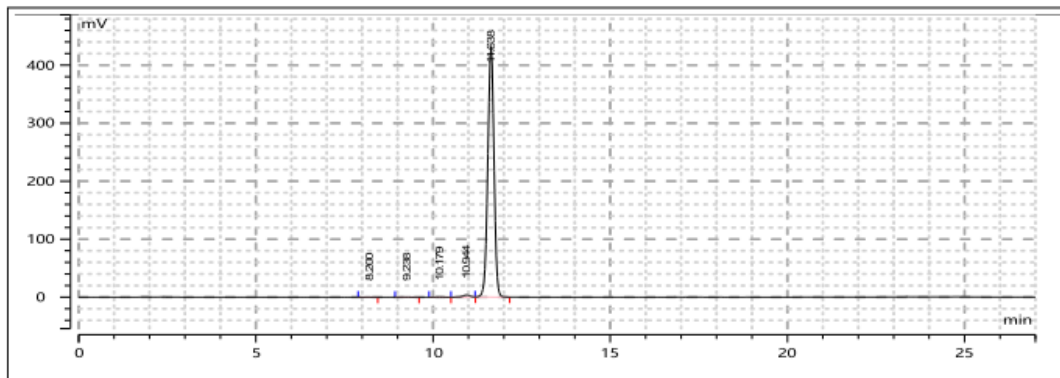
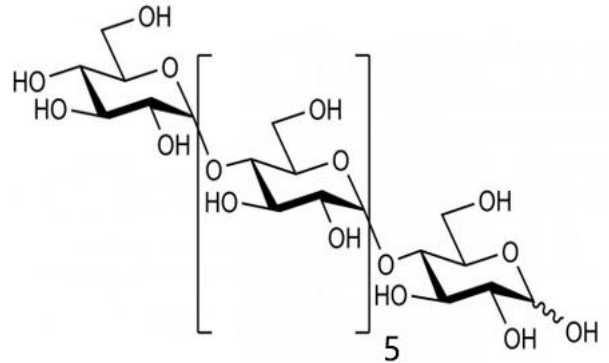
**Appearance:** White powder

**CAS:** 34620-78-5

**Solubility:** Methanol(very slightly),Water (Slightly)

**Storage:** 2-8°C

**Stability:** >5 years



峰列表

No	名称	保留时间 (min)	峰面积 (mV*s)	峰宽 (min)	半峰宽 (min)	峰高 (mV)	面积百分比 (%)	峰类型
1	N.A.	8.200	1.653	0.313	0.230	0.127	0.031	BB
2	N.A.	9.238	4.755	0.355	0.225	0.320	0.090	BB
3	N.A.	10.179	5.541	0.386	0.249	0.357	0.105	BB
4	N.A.	10.944	50.220	0.343	0.209	3.685	0.952	BB
5	N.A.	11.638	5211.275	0.308	0.185	432.528	98.821	BB
6	总计							

## Maltooligosaccharide

WARNING: THIS PRODUCT IS FOR RESEARCH ONLY  
NOT FOR HUMAN OR VETERINARY DIAGNOSTIC

www.e-biochem.com

sales@e-biochem.com

Phone:021-60498804/13917250134

