

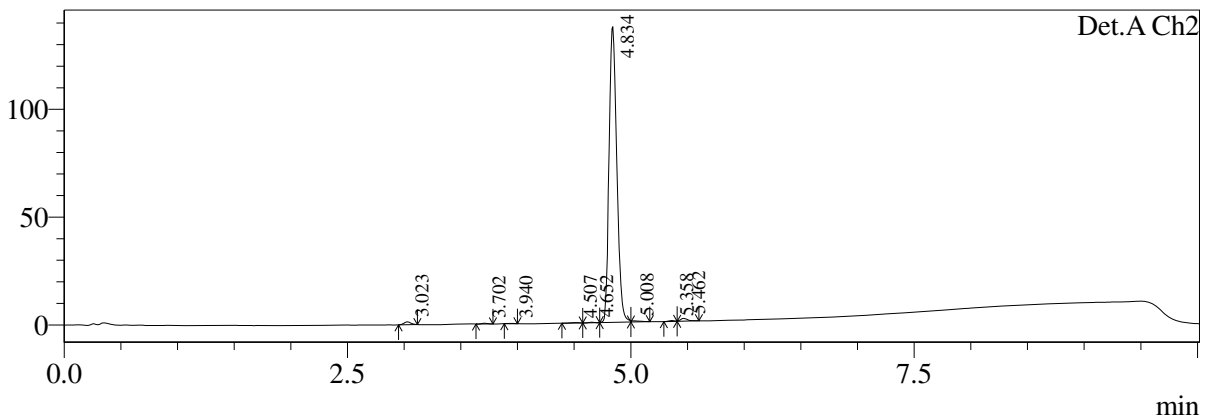
==== HPLC Report ====

Sample Information

Sample Name : 3772-44-9
 Sample ID : 3772-44-9
 Tray# : 1
 Vial# : 11
 Injection Volume : 1 uL
 Data Filename : 3772-44-9.lcd
 Method Filename : A-1-10-10MIN-45C.lcm
 Date Acquired : 7/02/2023 9:19:42 AM
 Description : Method: 10-100
 Column: XBRIDGE 2.1*50mm, 3.5um
 Mobile phase:
 H2O(0.05%TFA)-ACN(0.05%TFA) ACN from 10% to 100% over 7minutes
 hold 1 minute.
 Oven: 45C
 Flow rate: 0.8mL/min

<Chromatogram>

DATA\2023\202302\7\LC-2\3772-44-9.lcd
mV



1 Det.A Ch2 / 254nm

<Result>

PeakTable

Detector A Ch2 254nm

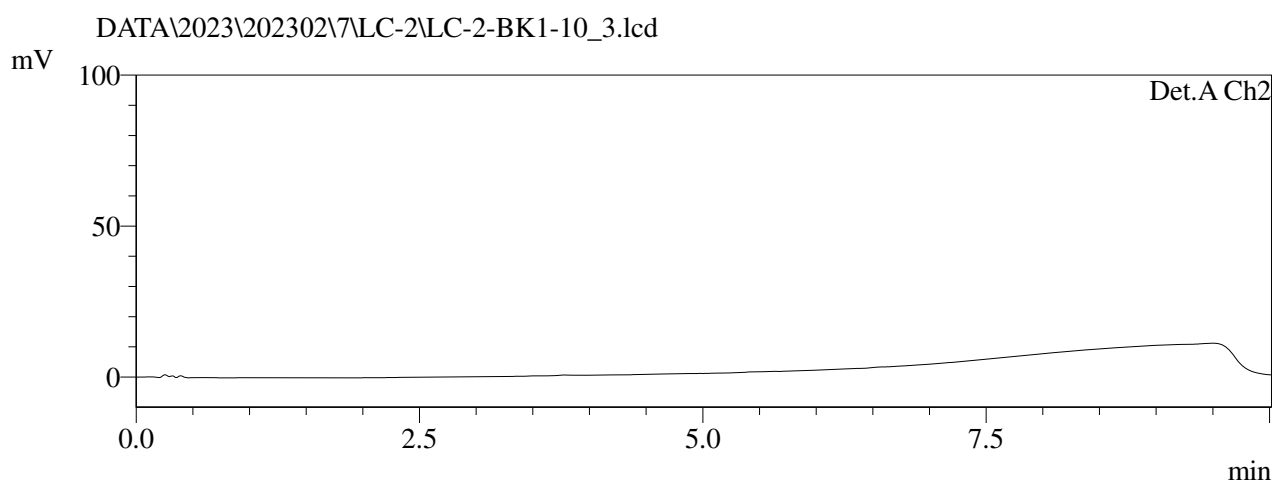
Peak#	Ret. Time	Area	Height	Area %
1	3.023	5710	1326	0.849
2	3.702	1336	354	0.199
3	3.940	806	231	0.120
4	4.507	1265	230	0.188
5	4.652	823	272	0.122
6	4.834	653329	137108	97.107
7	5.008	2697	599	0.401
8	5.358	1512	387	0.225
9	5.462	5312	1290	0.790
Total		672790	141797	100.000

==== HPLC Report ====

Sample Information

Sample Name : LC-2-BK1-10
Sample ID : LC-2-BK1-10
Tray# : 1
Vial# : 1
Injection Volume : 3 uL
Data Filename : LC-2-BK10-100_3.lcd
Method Filename : AB-10-100-10MIN-45C.lcm
Date Acquired : 7/02/2023 8:37:36 AM
Description : Method: 10-100
Column: XBRIDGE 2.1*50mm, 3.5um
Mobile phase: H2O(0.05%TFA)-ACN(0.05%TFA) ACN from 10% to 100% over 7minutes
hold 1 minute.
Oven: 45C
Flow rate: 0.8mL/min

<Chromatogram>



1 Det.A Ch2 / 254nm

<Result>

PeakTable

Detector A Ch2 254nm