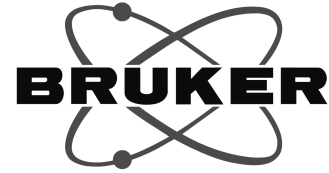


proton16 DMSO D:\ nmr1 13



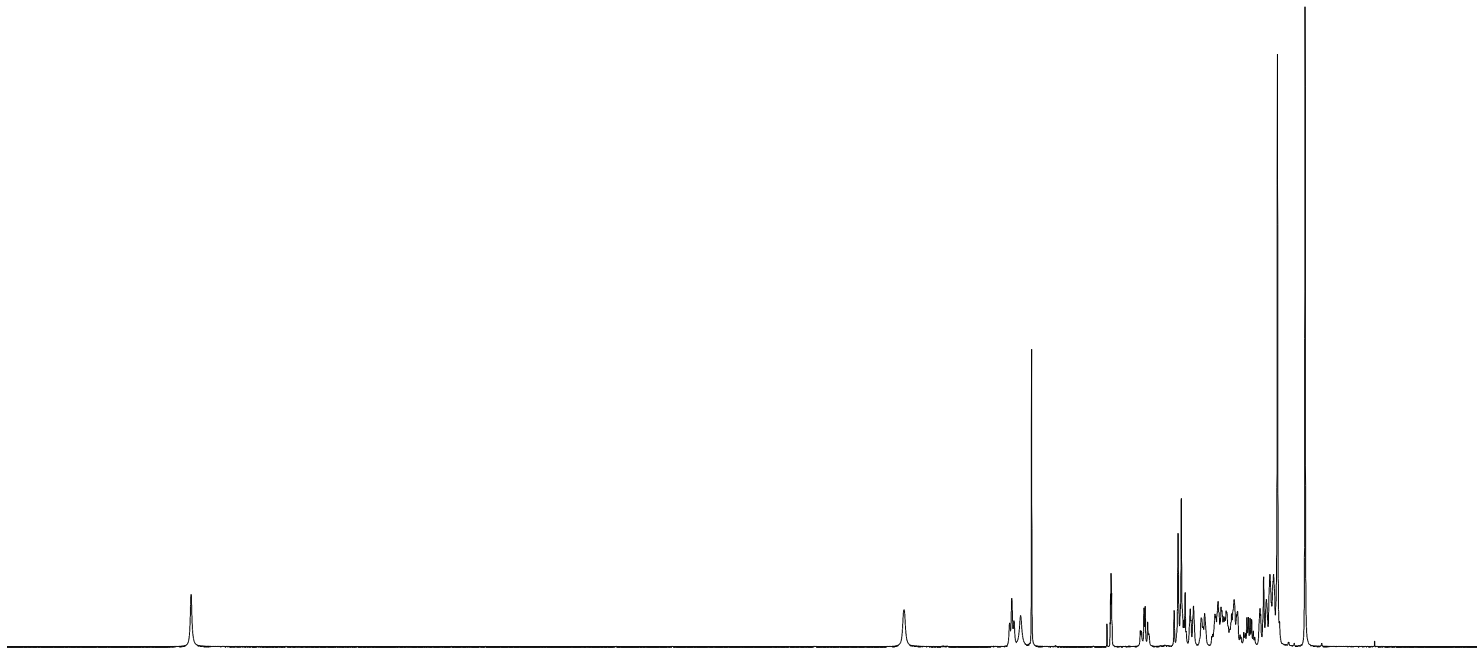
4.476
3.452
3.369
3.264
2.513
2.508
2.504
2.196
2.184
1.909
1.872
1.841
1.805
1.756
1.725
1.620
1.520
1.514
1.492
1.463
1.456
1.437
1.426
1.415
1.408
1.363
1.339
1.315
1.307
1.218
1.203
1.187
1.093
1.087
1.058
1.033
0.999
0.983
0.969
0.964
0.927
0.665

Current Data Parameters
NAME 13647-35-3
EXPNO 10
PROCNO 1

F2 - Acquisition Parameters
Date_ 20230427
Time 11.32
INSTRUM spect
PROBHD 5 mm PABBO BB-
PULPROG zg30
TD 65536
SOLVENT DMSO
NS 16
DS 2
SWH 8012.820 Hz
FIDRES 0.122266 Hz
AQ 4.0894465 sec
RG 101
DW 62.400 usec
DE 6.50 usec
TE 298.0 K
D1 1.00000000 sec
TD0 1

==== CHANNEL f1 =====
SFO1 400.1324710 MHz
NUC1 1H
P1 14.00 usec
PLW1 20.00000000 W

F2 - Processing parameters
SI 65536
SF 400.1300000 MHz
WDW no
SSB 0
LB 0 Hz
GB 0
PC 1.00



12 11 10 9 8 7 6 5 4 3 2 1 0 ppm

1.02

1.00

1.89

1.06

1.03

20.26

3.14